

16th ESSKA Congress

14-17 May 2014 / AMSTERDAM

The presence of chondral injuries worsens the MRI aspect of a meniscal polyurethane scaffold without influencing the clinical outcomes

*Gelber P, Petrica A, Isart A, Mari-Molina R, Erquicia J, Abat F,
Monllau JC*



Joan Carles Monllau



Marc Tey



Xavier Pelfort



Pablo Eduardo Gelber



Juan Ignacio Erquicia

The MR aspect of a poliurethane meniscal scaffold is worse in advanced cartilage defects without deterioration of clinical outcomes after a minimum two-year follow-up

*Gelber PE, Marlet T, Besalduch M, Mari-Molina Raquel, Abat F,
Erquicia J, Pelfort X, Monllau JC*



Joan Carles Monllau



Marc Tey



Xavier Pelfort



Pablo Eduardo Gelber



Juan Ignacio Erquicia

We declare no conflict of interest



Joan Carles Monllau



Marc Tey



Xavier Pelfort



Pablo Eduardo Gelber



Juan Ignacio Erquicia

equilae
Unidad de cirugía artroscópica

Purpose



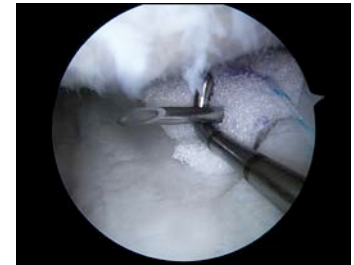
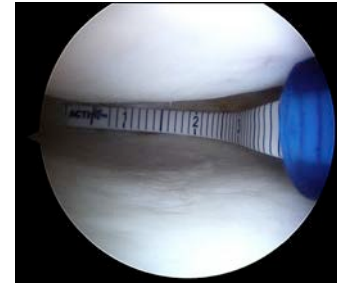
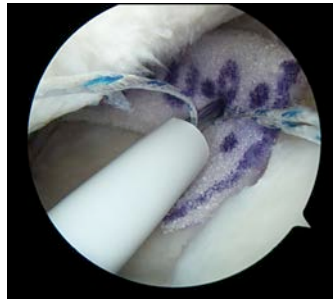
**Degree of
chondral injuries
of the knee**



**Functional and MRI
results of a meniscal
polyurethane scaffold**

Methods

- 48 patientes
- Actifit® implantation
- ICRS chondral injurie evaluated at arthroscopy
- WOMET, IKDC, Kujala, EVA, Degree of satisfaction



Evaluation of the MRI aspect of the meniscal scaffold with the Genovese Score at 2 year's follow-up

Características	Type 1	Type 2	Type 3
Morphology and Size	Totally reabsorbed	Small Morphology+/- regular	Shape/size similar to normal meniscus
Signal intensity	+++ hyper	+ hyper	Isointense with the normal meniscus

* Follow-up of collagen meniscus implants by MRI. E. Genovese, M.G. Angeretti, M. Ronga, A. Leonardi, R. Novario, L. Callegari. C. Fugazzola. *Radiol med* (2007) 112:1036-1048

Results

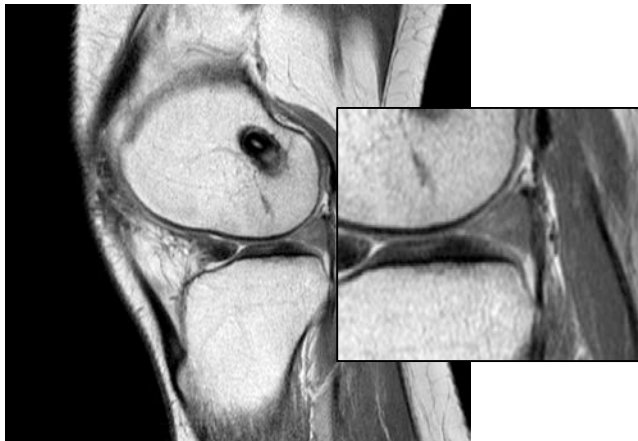
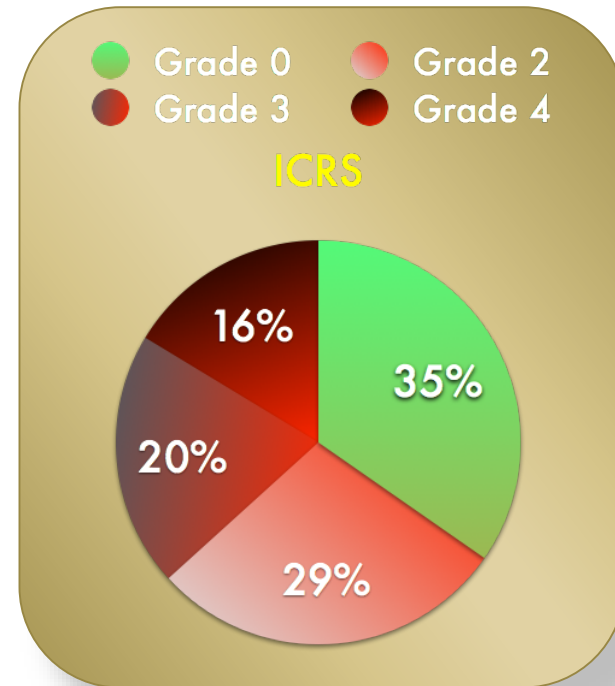
- Gender: 38 M / 10 F
- Age: 39 years (17 - 58)
- Side: 21 right / 27 left
- 36 Medial / 12 Lateral

- FU: 38 months (25-75)

- ICRS

No lesion (0)	-	16
Grade 1	-	14
Grade 2	-	10
Grade 4	-	9

Worse results in Size and Morphology with higher ICRS scores



Results

SCORE	PRE	POST	P
WOMET	36,2 (± 7,6)	75,8 (± 12,9)	0,02
IKDC	32.3 (± 13,5)	75.5 (± 15,4)	0,03
KUJALA	39.2 (± 8,1)	85,6 (± 13,4)	0,042

- EVA: $7,4 \pm 1$ a $2,6 \pm 1,8$
- Satisfacción : 3.6 ± 0.8 puntos.

No relationship between the presence of chondral injury with functional outcomes

Conclusions

- ▣ The absence of chondral injury lead to a better MRI aspect of the polyurethane scaffold
- ▣ No relationship between chondral injury and functional results

Long-term effect of this MRI aspect remains uncertain