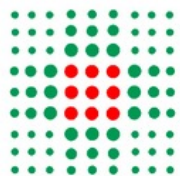


SATISFACTORY LONG-TERM CLINICAL OUTCOMES AND HIGH SURVIVAL RATES IN PATIENTS WHO UNDERWENT MEDIAL PATELLOTIBIAL LIGAMENT (MPTL) RECONSTRUCTION FOR PATELLOFEMORAL INSTABILITY

S. ZAFFAGNINI

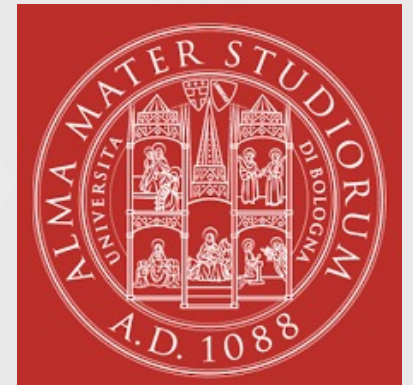
V. DAVIDONI, A. GRASSI, G. DAL FABBRO, G. LUCIDI, P. AGOSTINONE

**2nd ORTHOPAEDIC & TRAUMA UNIT
RIZZOLI ORTHOPAEDIC INSTITUTE
UNIVERSITY OF BOLOGNA; BOLOGNA, ITALY**



**SERVIZIO SANITARIO REGIONALE
EMILIA - ROMAGNA**

Istituto Ortopedico Rizzoli di Bologna
Istituto di Ricovero e Cura a Carattere Scientifico



DISCLOSURES

S.Z.:

DePuy and Smith&Nephew consultant

OTHER AUTHORS: Nothing to disclose

AIMS

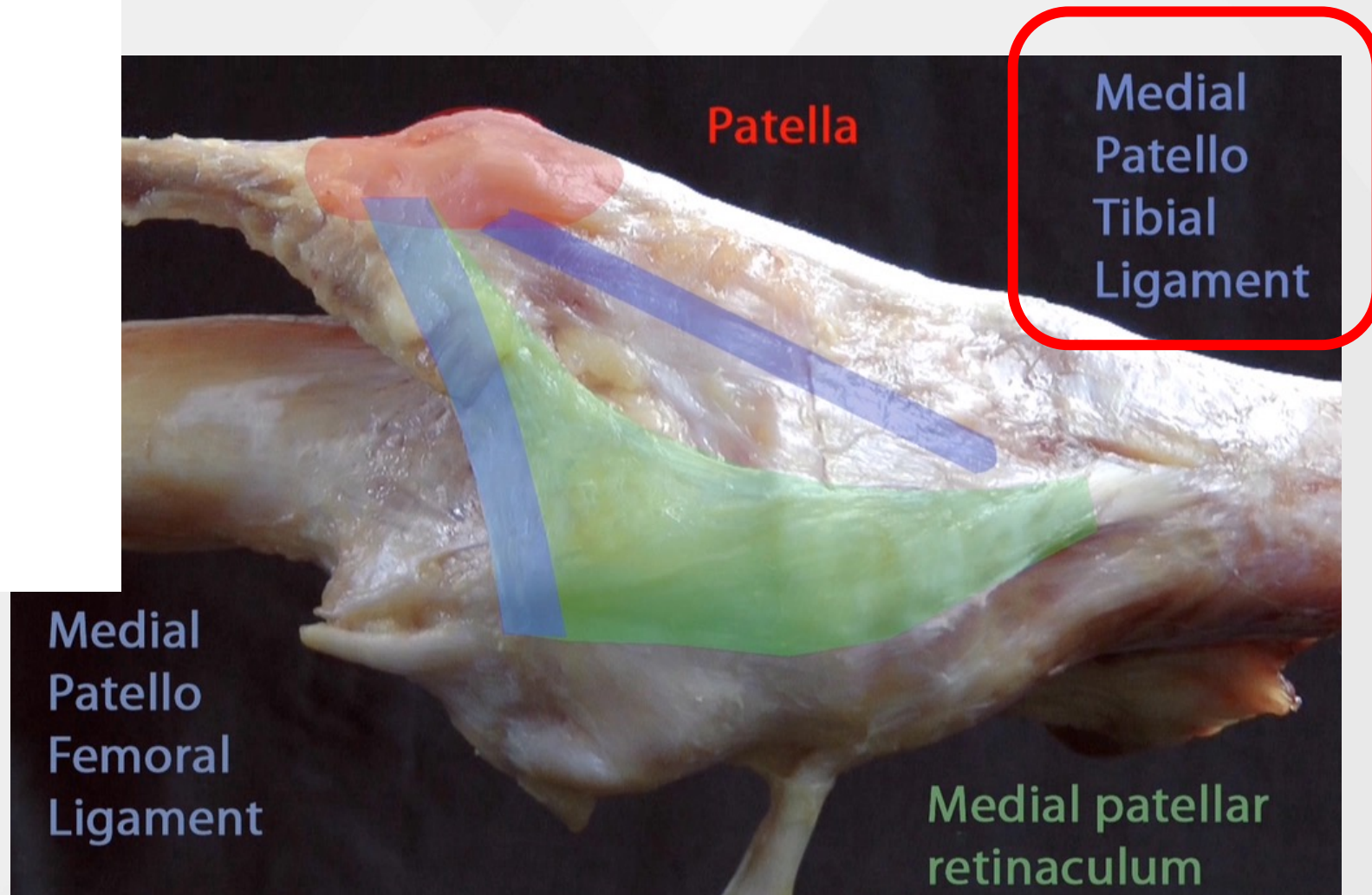
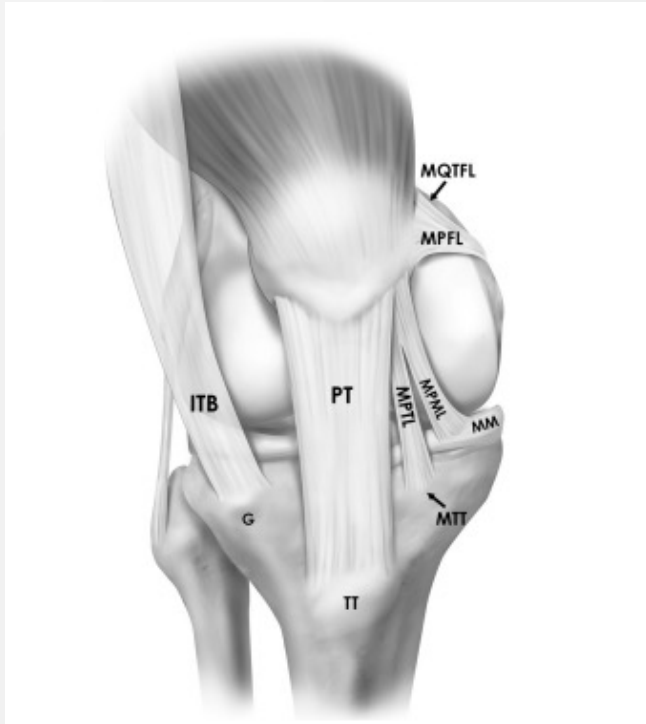
TO ASSESS:

✓ **LONG TERM CLINICAL OUTCOMES**

✓ **SURVIVAL RATES**

OF AN ORIGINAL TECHNIQUE FOR MPTL RECONSTRUCTION

MEDIAL PATELLAR STABILIZERS



METHOD-CRITERIA

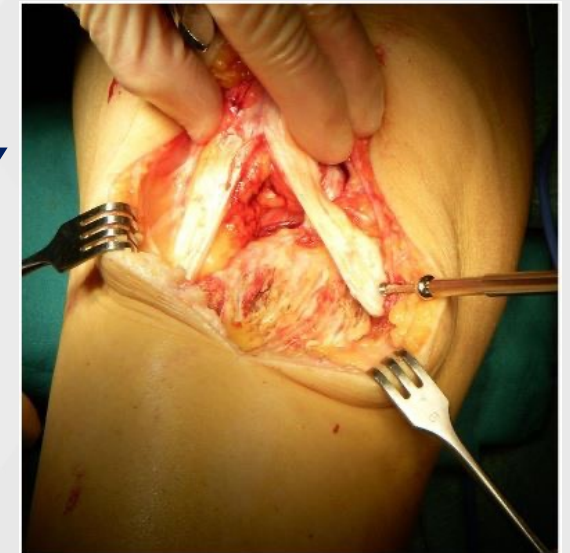
- ✓ **STUDY DESIGN: RETROSPECTIVE CASE SERIES OF 26 KNEES**
(25 PATIENTS)

INCLUSION CRITERIA

- ✓ **ALL THE AVAIABLE PATIENTS THAT UNDERWENT MPLT-R FROM**
2000 TO 2008
- ✓ **ALL PATIENTS, BEFORE SURGERY, EXPERIENCED FAILURE OF**
CONSERVATIVE TREATMENT AND POSITIVE APPREHENSION
TEST

METHOD- SURGICAL TECHNIQUE

- ✓ HARVESTING OF **MEDIAL THIRD OF PATELLAR TENDON** WITH A CORRESPONDING 7 MM WIDE AND 7 MM LONG BONE PLUG FROM TIBIAL TUBEROSITY (**INSERTION ON PATELLA MAINTAINED**)
- ✓ GRAFT **MEDIALIZED AND PUT UNDER TENSION**, LOCATION NEAR TIBIAL INSERTION SUPERFICIAL MEDIAL COLLATERAL LIGAMENT (**sMCL**)
- ✓ REPEATED DYNAMIC PATELLAR TRACKING TO ASSESS STABILITY



RESULTS- DEMOGRAPHICS

41,5 ± 10,5 YEARS AT FINAL FU



✓ 26 KNEES (25 PATIENTS, 18 FEMALES AND 7 MALES) → 21 ATRAUMATIC LUXATIONS, 5 TRAUMATIC

✓ CALLED IN APRIL 2021

✓ **MEAN FU TIME 15.6 YEARS ± 2.5 (11.4-20.1)**

✓ EVALUATION OF CLINICAL SCORE, SPORT
ACTIVITY & PAIN

✓ FAILURES CONSIDERED AS REDISLOCATION + TOTAL KNEE ARTHROPLASTY

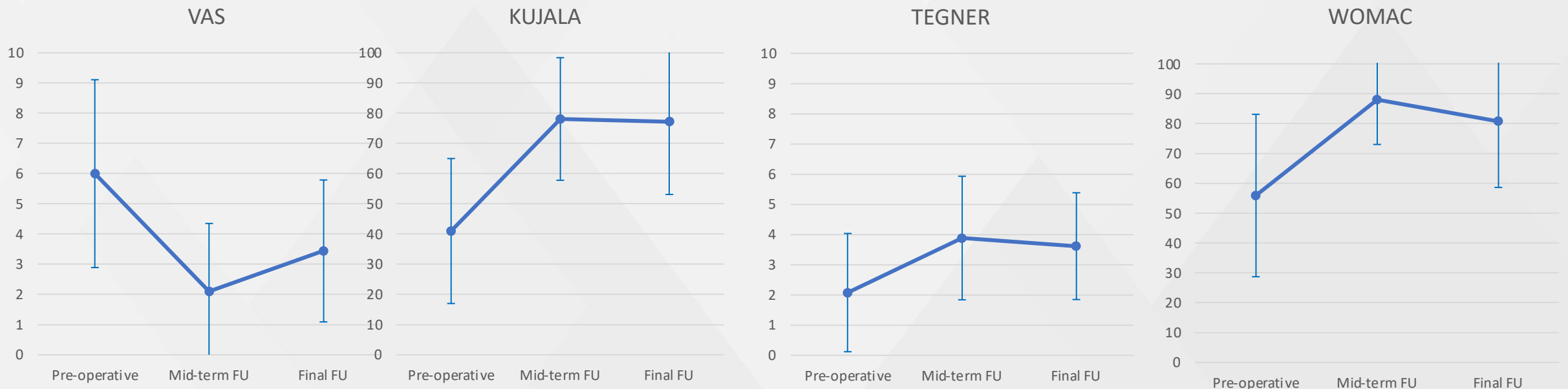
tot patients	25		
sex (female/male)	18/7		
tot knees	26		
laterality (left/right)	12/14		
cause of luxation (atraumatic/traumatic)	21/5		
age at first luxation (years)	19,4±10,5	(8,4-44,1)	
number of luxation	1-3	10	38,50%
	>3	11	42,30%
	continuous	5	19,20%
time from first luxation to surgery	5,1±5	(0,3-20,1)	
age at surgery	26,3±10,6	(11,4-47,9)	
age at final follow up	41,5±10,5	(26,9-64,8)	
years of follow up	15,6±2,5	(11,4-20,1)	

PREVIOUS SURGERIES + CONCURRENT SURGERY WITHIN MPTL-R

Concurrent surgery			%
Trochleoplasty	5	26	19,2
Medial facectomy	1	26	3,8
Lateral facectomy	1	26	3,8

Previous surgery			%
Lateral release	3	26	11,5
Distal realignement	3	26	11,5
Distal femoral osteotomy	1	26	3,8
Lateral meniscectomy	1	26	3,8
Medial meniscectomy	3	26	11,5
No previous knee surgery	15	26	57,7

RESULTS-PROMS

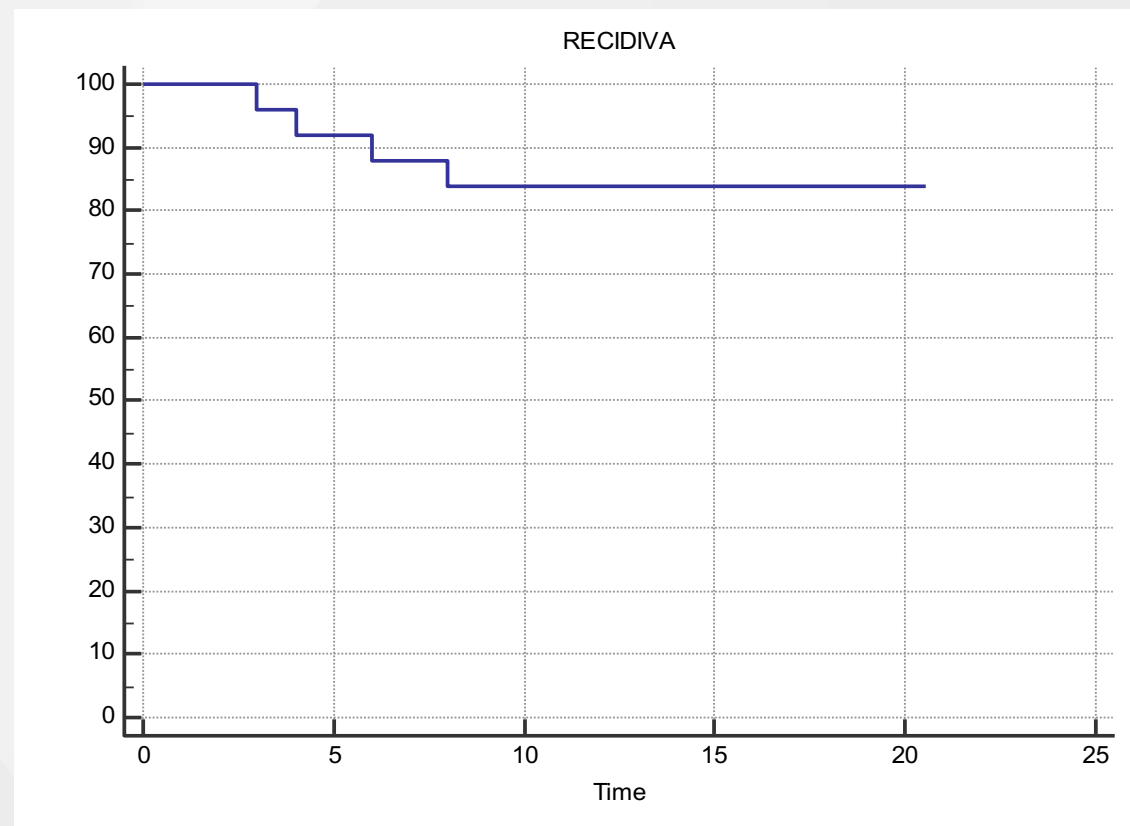


PRE OP CLINICAL SCORES VS. POST OP CLINICAL SCORES $p < 0,05$

RESULTS-FAILURE RATE

FAILURES	4	15,38%
NO FAILURE	22	84,62%

SURVIVAL	
5 YRS	92,00%
10 YRS	84,00%



CONCLUSION

- ✓ RAPID AND SAFE SURGERY
- ✓ INDICATED AS SINGLE OR COMBINATED PROCEDURE (MPFL-R, TIBIAL TUBEROSITY TRASPOSITION, TROCLEOPLASTY)
- ✓ STABLE CLINICAL LONG-TERM RESULTS
- ✓ LOW REDISLOCATION RATE

REFERENCE

Zaffagnini S, Grassi A, Marcheggiani Muccioli GM, Luetzow WF, Vaccari V, Benzi A, Marcacci M. Medial patellotibial ligament (MPTL) reconstruction for patellar instability. *Knee Surg Sports Traumatol Arthrosc.* 2014 Oct;22(10):2491-8. doi: 10.1007/s00167-013-2751-1. Epub 2013 Nov 7. PMID: 24196574